

# Esri Enterprise Agreement Renewal

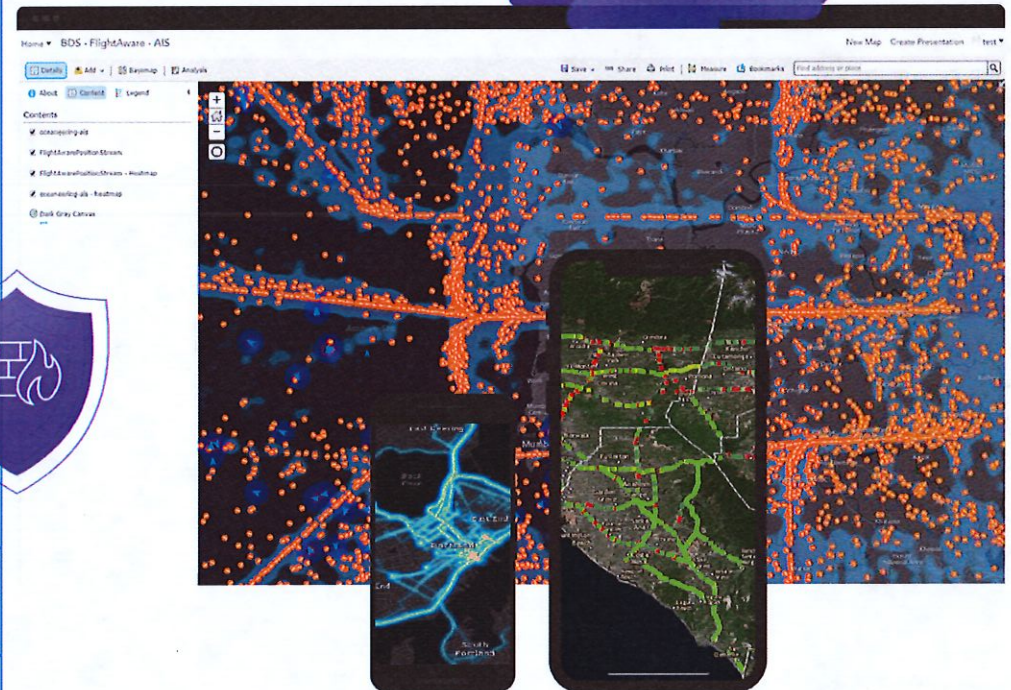
TTI Presentation



Lisa Kent, CIO  
Summer Xiao, Deputy CIO – Enterprise Applications

# Summary

<b>Vendor</b>	<b>Esri</b>
<b>Purpose</b>	Esri software is the city standard GIS platform for the City of Houston. This contract is to purchase the continued support and maintenance of Esri software. Contract also include capacity for future professional service needs.
<b>Contract Amount</b>	\$4,752,000
<b>Departments Using</b>	City Wide
<b>Contract Term</b>	3 Years
<b>MWBE Goal</b>	0%



## Vendor Overview

- COH implemented Esri software as the city standard GIS platform in 2008.
- Esri is the world's largest GIS company. GIS (geographic information system) is a framework for gathering, managing, and analyzing data. Its software is deployed in more than 350,000 organizations including the world's largest cities, most national governments, 75 percent of Fortune 500 companies, and more than 7,000 universities.
- COH departments that use Esri software for their essential operations include 311, Airport, Fire, Health, Housing, HEC, Neighborhood, OEM, Planning, Police, Public Works, Solid Waste
- ESRI is being sole sourced by the city due to the city's current investment in ESRI and its comprehensive offerings.



## 2019 Department ArcGIS Licenses

---

Department	HPD	HPW	PDD	HHD	HAS	HCD	Others
Percentage	40.3%	32.8%	6.4%	4.9%	4.6%	3%	8%

### ArcGIS License Statistics:

- 24 departments uses GIS software during Calendar Year 2019.
- "**Others**" include ARA, FIN, FMD, GSD, 311, HEC, HFD, HITS, HR, LGL, HPL, MYR, MCD, DON, OEM, PRD, SWM, and TranStar.
- City has total 1600 licenses currently.

## Contract Core Components

---

- **Current Software Licenses:** Licenses for existing Esri ArcGIS products
- **Support and Maintenance:** Support and maintenance for Esri ArcGIS products
- **New Software:** ArcGIS Hub Premium, ArcGIS Notebook, Utility Network Management, Esri Roads & Highways, ArcGIS LocateXT, Image Analyst for ArcGIS Pro
- **Esri Premium Support Services:** Prioritized incident management, personalized technical support, 24/7/365 Support Availability
- **Planned Professional Services:** Professional services for GIS consulting, solution design, custom development, system deployment, and training



# License Overview

Contract	Current	Future	Increase
Annual EA Fee	\$960,000	\$1,350,000	40.6%
ArcGIS License Count	1600	3390	112%

License Increase Breakdown - There is a net increase of 1790 licenses.

- HPW - 820/1790
- HPD - 320/1790
- Emergency Operation Licenses - 350/1790
- Other departments - 350/1790



## 3 Year Contract Spend Forecast

Contract	Year 1	Year 2	Year 3	Total
Annual EA Fee	\$1,100,000	\$1,450,000	\$1,500,000	\$4,050,000
Professional Services		\$351,000	\$351,000	\$702,000
<b>Planned Cost Based on 3 Year Term</b>	<b>\$1,100,000</b>	<b>\$1,801,000</b>	<b>\$1,851,000</b>	<b>\$4,752,000</b>



## Q&A

---

Questions?