

Municipal Setting Designations



Jennifer M. Clancey
Program Manager

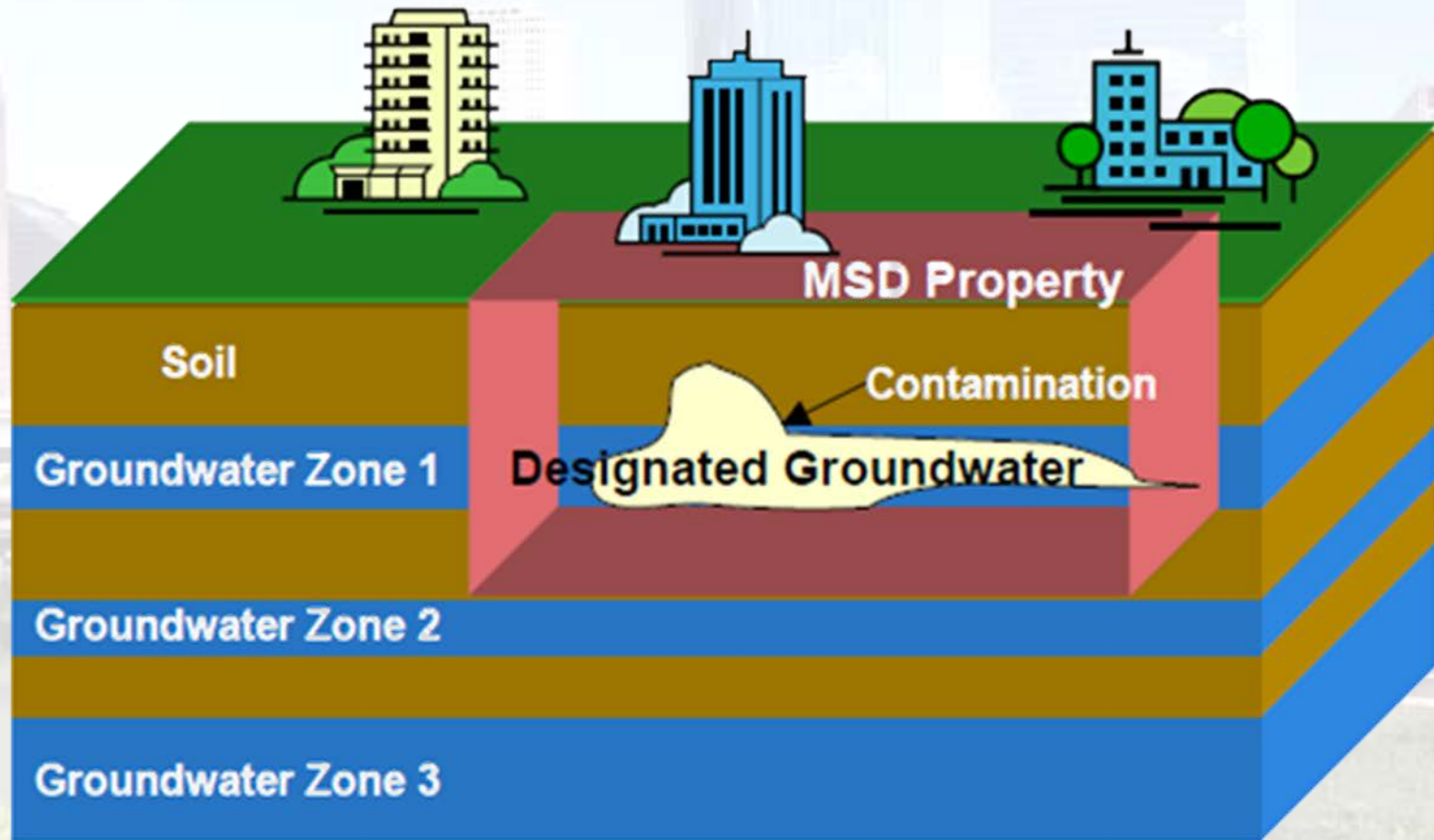


What is an MSD?

- A **voluntary** deed restriction that prohibits the use of impaired groundwater as potable water
 - A tool property owners can use to address environmental impairments to groundwater
 - Allows reinvestment and redevelopment of impaired properties
- A public health protection



MSD Depiction

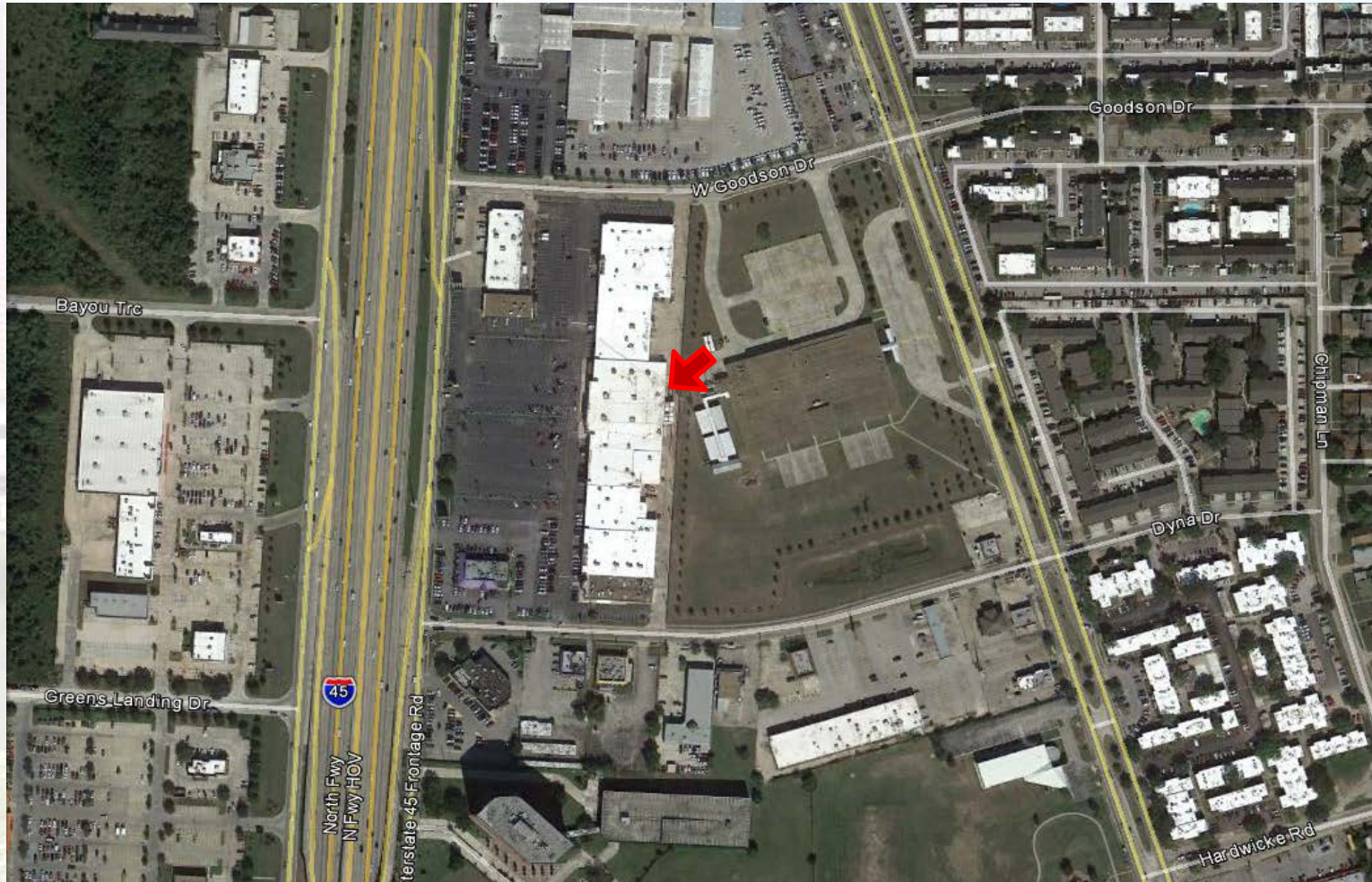


What is an MSD?

- It is a State Program
 - Administered by the Texas Commission on Environmental Quality (TCEQ)
 - Requires Local Support
- Article 13 of Chapter 47
 - Public Hearing Required



10922 North Freeway

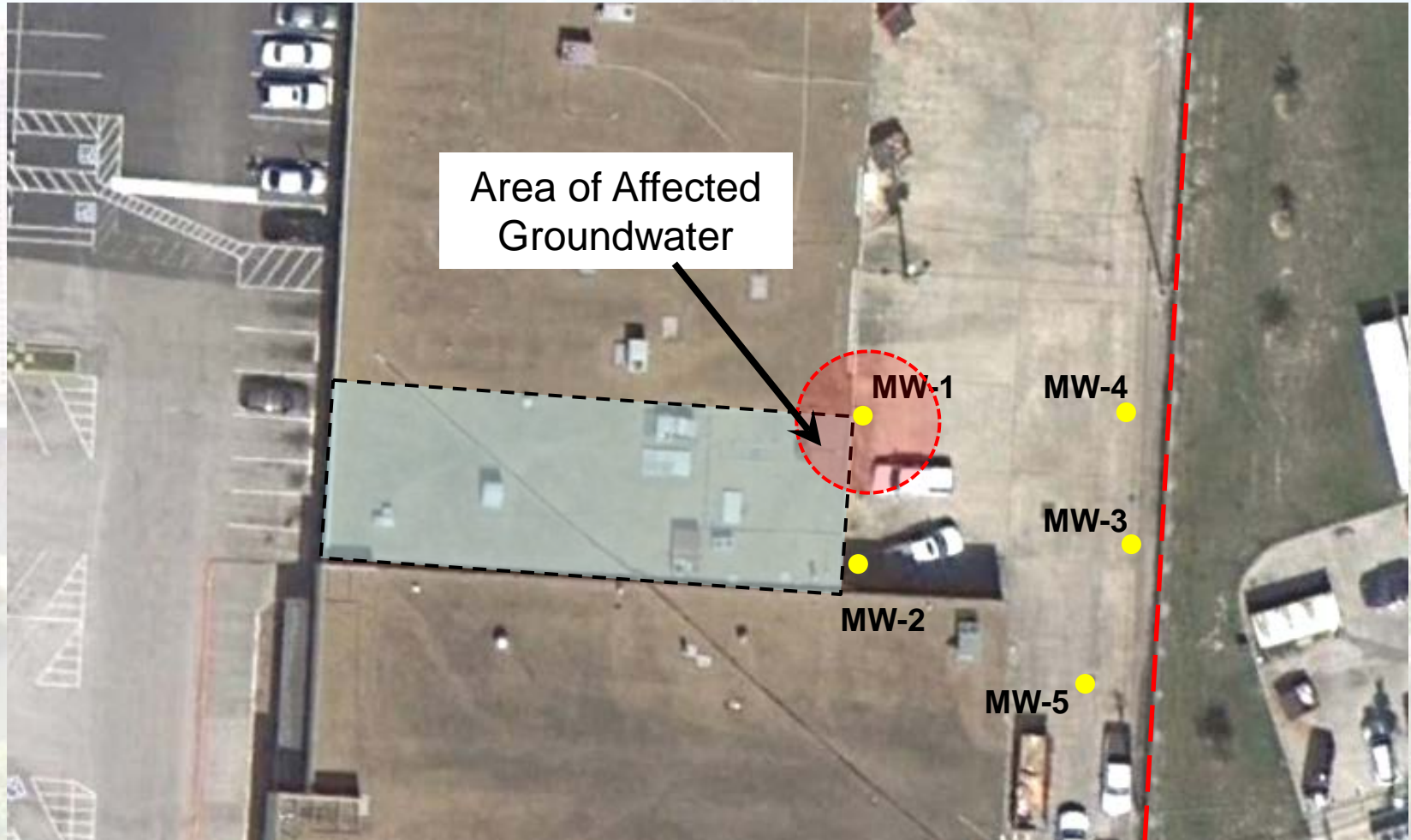


CCG Houston I, LP

- The site is currently developed as a multi-tenant shopping center. Prior to being developed as a shopping center in 1974, the site was undeveloped. Two dry cleaners have historically been located on the site, however only the Crown Cleaners facility, formerly in Suite 10922, operated as an on-site dry cleaning plant from 1997 until 2011.
- Site use is expected to remain the same.



Groundwater Impacts



Contact Information

Jennifer M. Clancey
Program Manager

Public Works & Engineering
City of Houston,
1002 Washington, 3rd Floor
Houston, Texas 77002



msd@houstontx.gov
(832) 394-9005

