

Municipal Setting Designations



Ann Marie Stone Sheridan, P.E.
Supervising Engineer

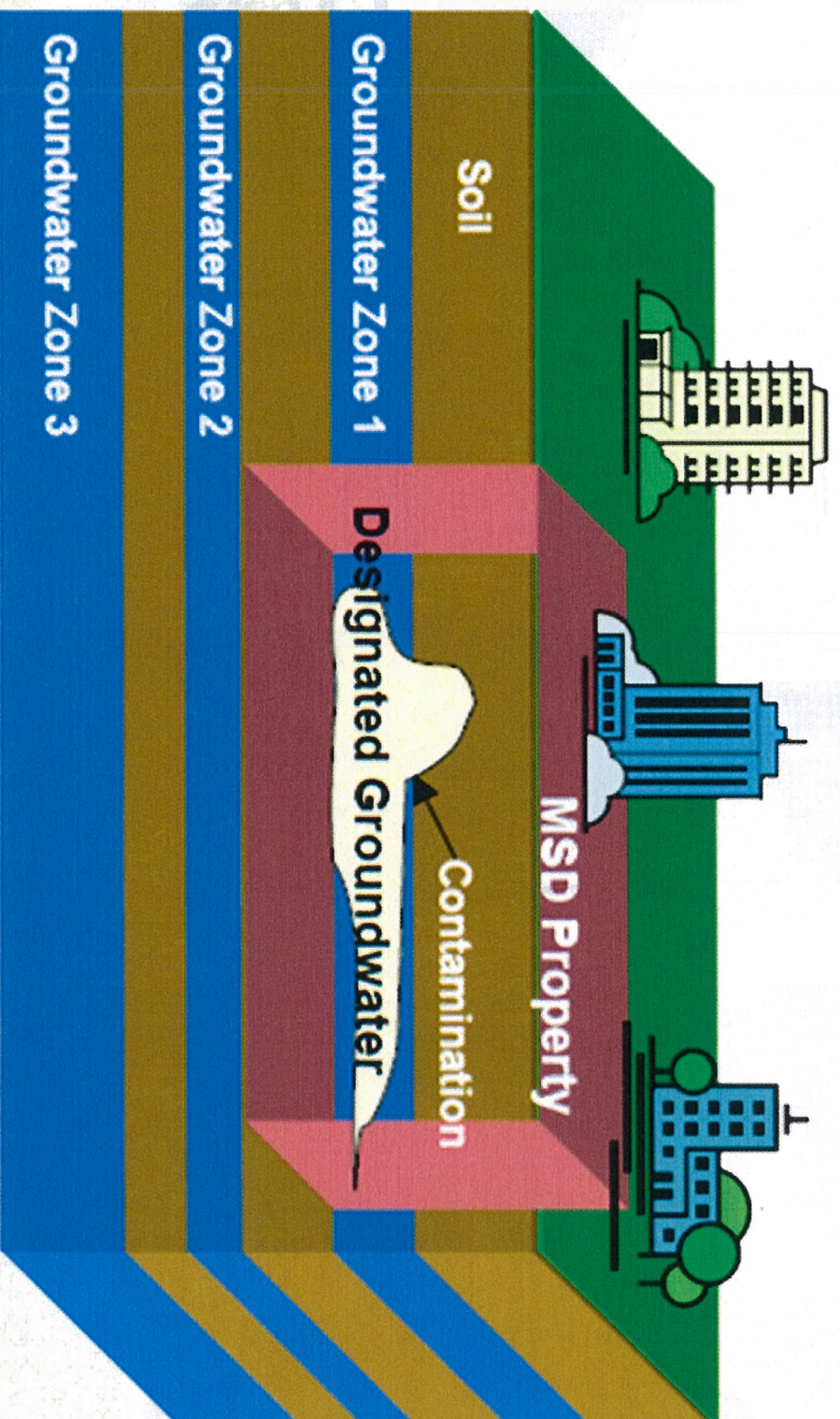


What is an MSD?

- A **voluntary** deed restriction that prohibits the use of impaired groundwater as potable water
 - A tool property owners can use to address environmental impairments to groundwater
 - Allows reinvestment and redevelopment of impaired properties
- A public health protection

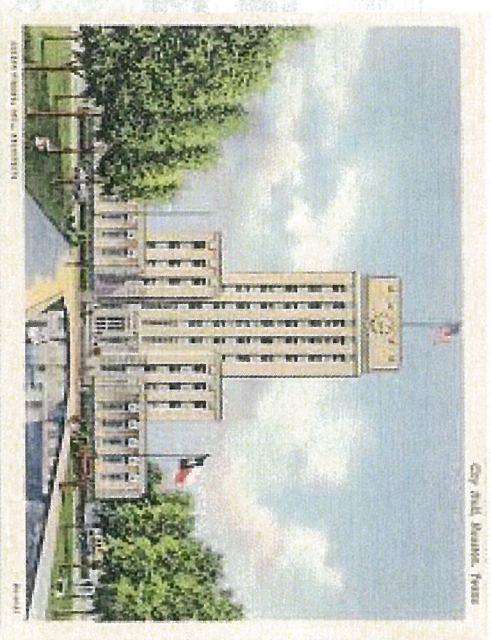


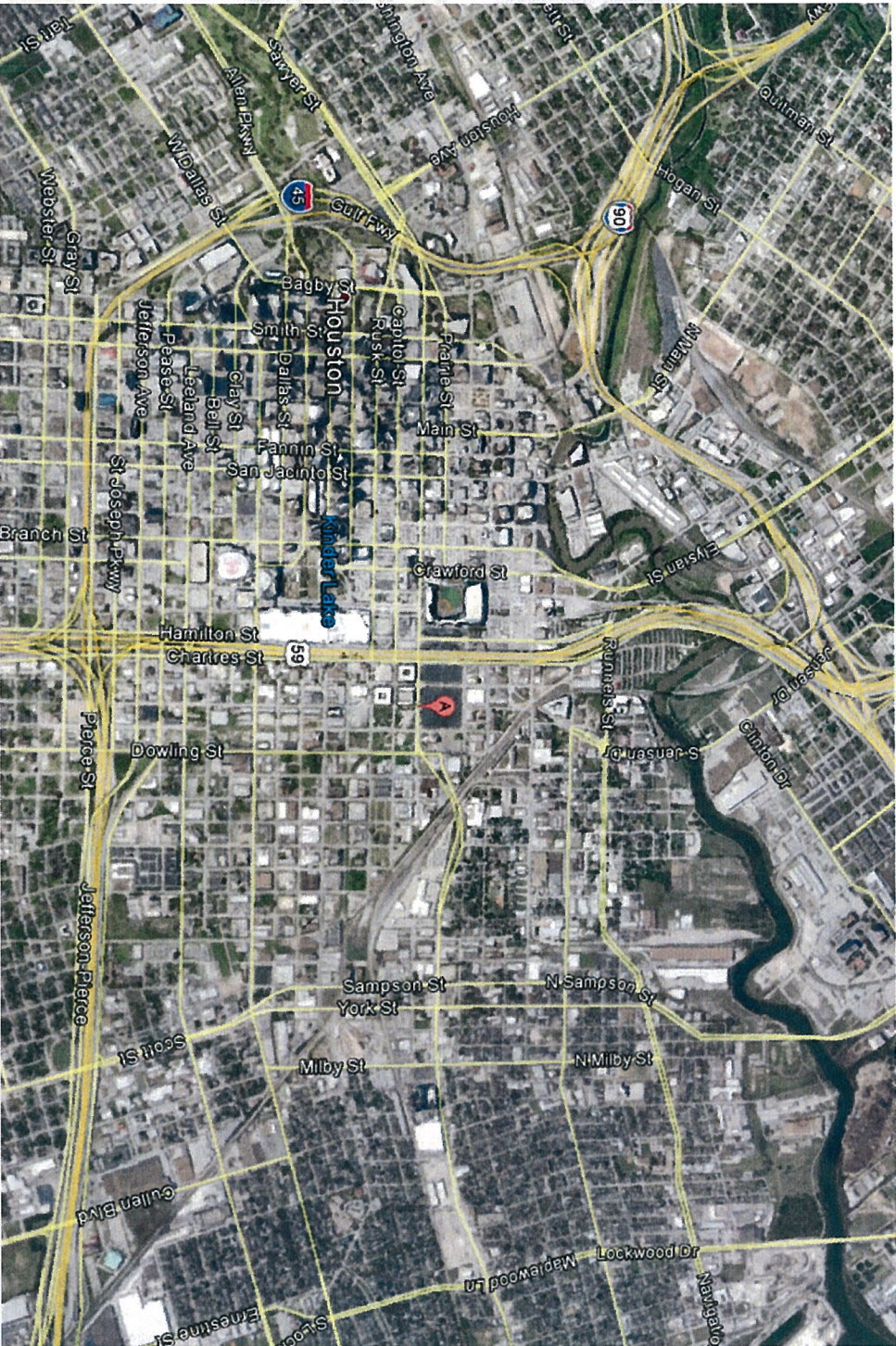
MSD Depiction



What is an MSD?

- It is a State Program
 - Administered by the Texas Commission on Environmental Quality (TCEQ)
 - Requires Local Support
- Article 13 of Chapter 47
 - Public Hearing Required





2200 Texas Ave

City of Houston

- Six-Block property, approximately 12 acres, located in an area with a long history of commercial, industrial, and residential use dating back more than 120 years.
- The anticipated future use of this property will remain a stadium.



Groundwater Impacts



Contact Information

Ann Marie Stone-Sheridan
Supervising Engineer

Public Works & Engineering

City of Houston,

1002 Washington, 3rd Floor
Houston, Texas 77002



msd@houston.tx.gov
(832) 394-9005

