



Thomas Muñoz

Acting Director, Public Safety
& Homeland Security

 713-884-4500

Office of Emergency Management

The City of Houston Office of Emergency Management (OEM) is the chief coordinating agency for disaster response in the nation's fourth-largest City; OEM provides emergency response coordination and communication assistance to City agencies, and serves as liaison to regional, state and federal agencies during times of emergency. In addition, OEM engages with the local community to promote emergency preparedness through a variety of initiatives.

Our Mission: The CoH Office of Emergency Management is committed to safeguarding everyone who lives, works, and plays in Houston against all hazards and threats through coordinated planning and response with a trusted, compassionate, and diverse team focused on people, professionalism, preparedness, and partnerships.



The Four Phases HOUSTON OEM



PREPAREDNESS

RESPONSE

RECOVERY

MITIGATION



3



Emergency Plan Updates

HOUSTON OEM

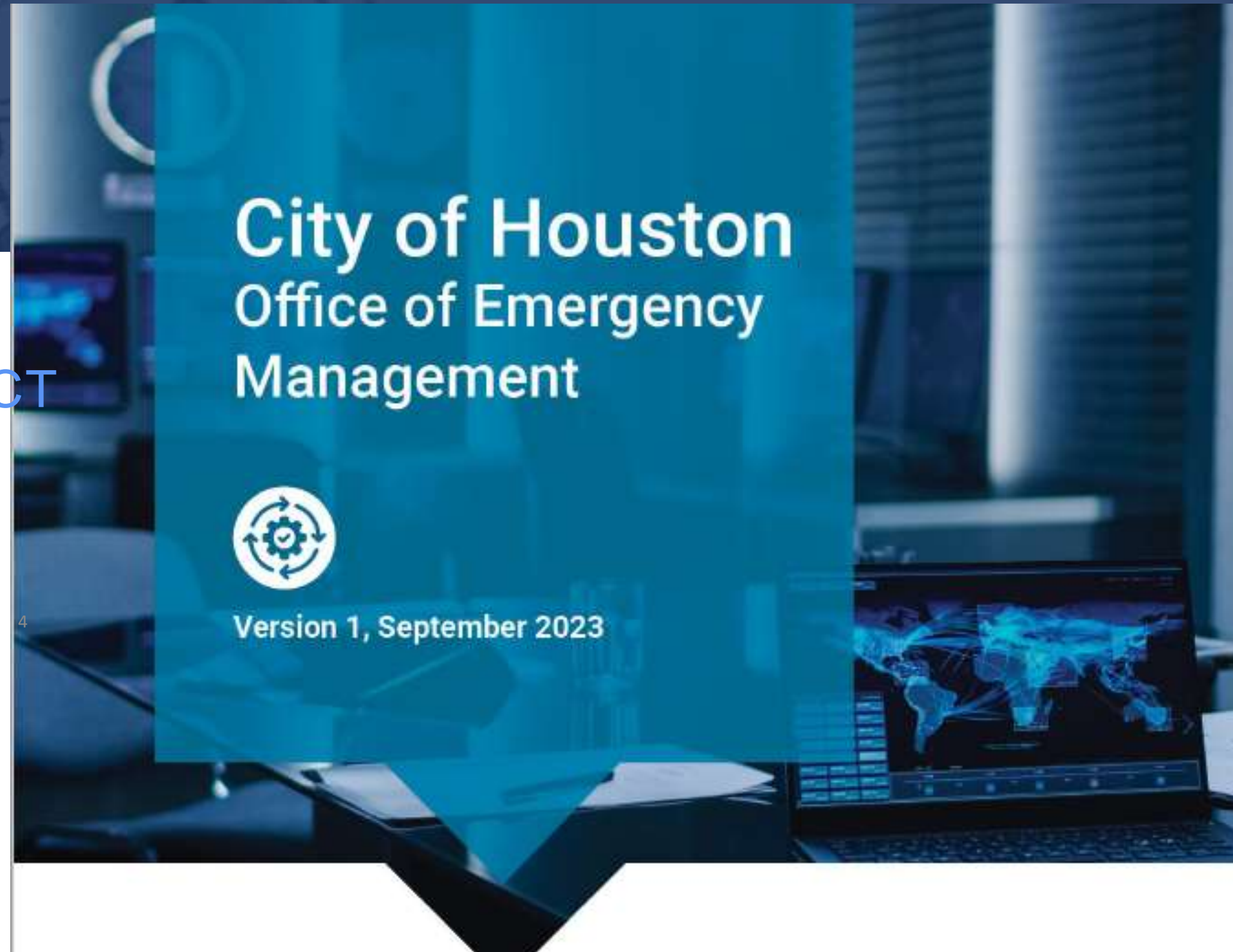
30+ PLANS & DOCUMENTS

UPDATED 2023 AS CDBG-DR17 PROJECT

Comprehensive Emergency Management Plan (CEMP)

ESF 1 Transportation
ESF 2 Communications
ESF 3 Public Works & Engineering
ESF 4 Firefighting
ESF 5 Emergency Management
ESF 6 Mass Care
ESF 8 Public Health & Medical
ESF 9 Search and Rescue
ESF 10 Oil and HAZMAT
ESF 12 Energy
ESF 13 Public Safety
ESF 14 Lifelines
ESF 15 Public Information
ESF 20 Cybersecurity

Hazard Mitigation
Continuity of Operations (COOP)
Continuity of Government (COG)
CPOD Framework
DAFN Framework
Disaster Debris Management
Disaster Recovery
Evacuation
Family Assistance Center
Flood
Hurricane
Severe Weather
Strategic Plan
Volunteer & Donations Management



Hurricane Plan HOUSTON OEM

120 HOUR TIMELINE

COLLAPSABLE FOR
RAPID INTENSIFICATION

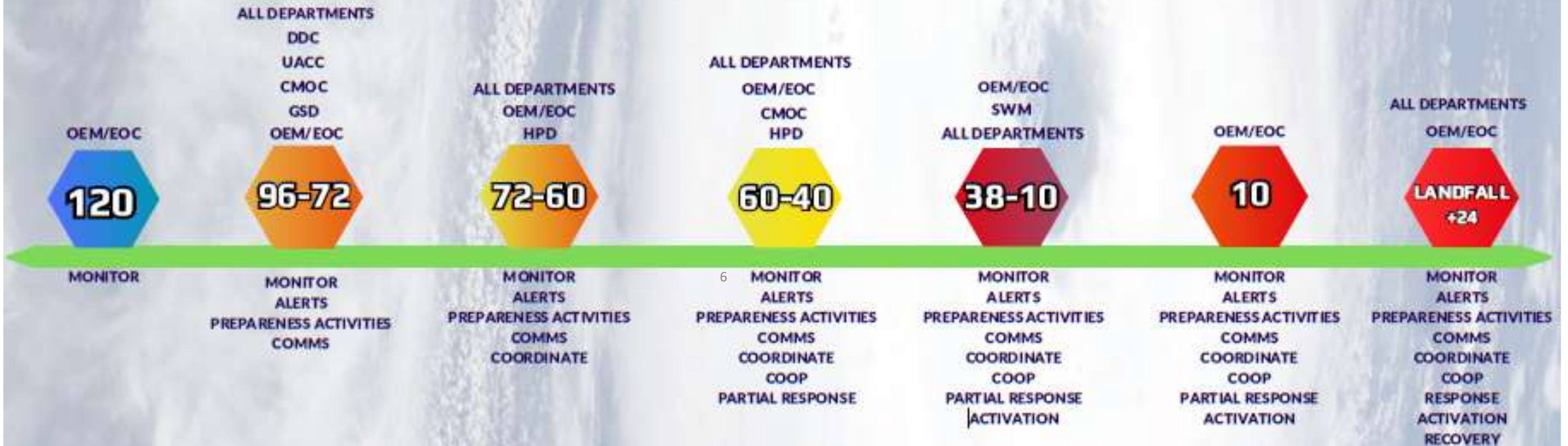
EVACUATION, SHELTER,
DAMAGE ASSESSMENT

RECOVERY



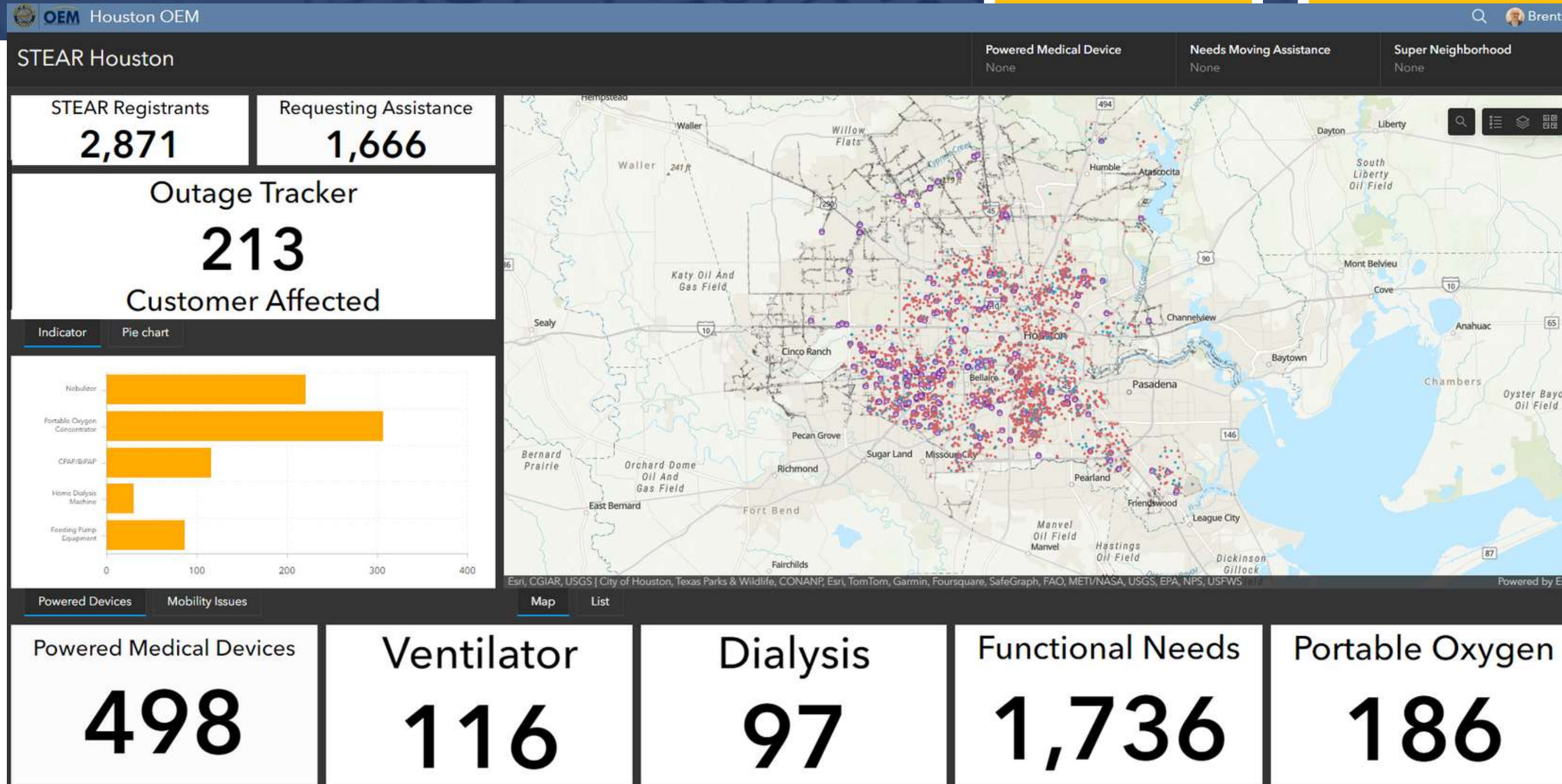


H120 TIMELINE



GIS support

HOUSTON OEM



Presentation for Councilmembers



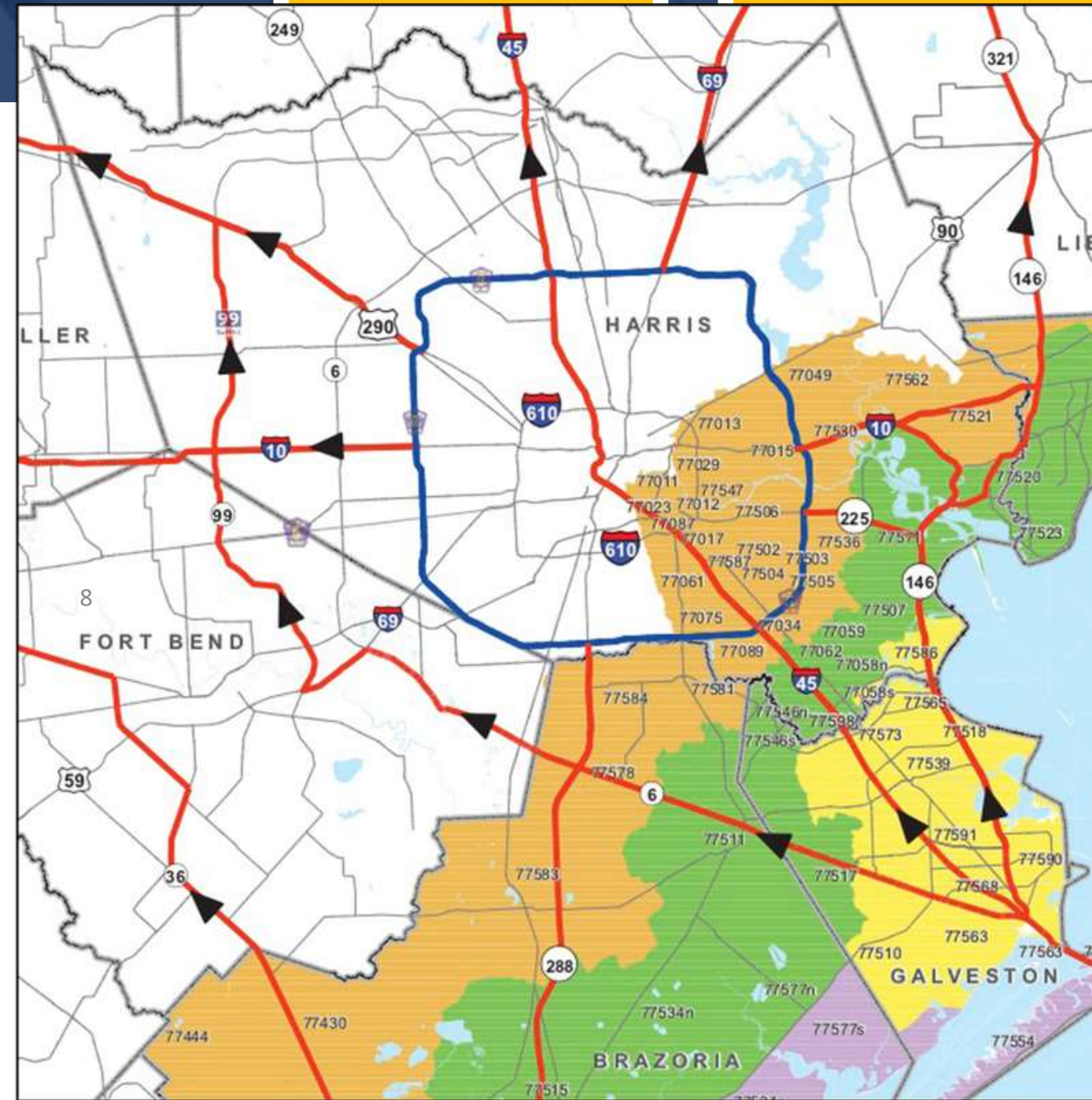
Evacuation

HOUSTON OEM



ZipZone
s

ZIP ZONE COASTAL				
77414s	77422s	77465s	77534s	77541
77550	77551	77554	77563	77577s
77623				
ZIP ZONE A				
77058s	77510	77514s	77518	77539
77563	77565	77568	77573	77586
77590	77591			
ZIP ZONE B				
77058n	77059	77062	77414n	77422n
77465n	77507	77511	77514n	77515
77517	77520	77523	77531	77534n
77546n	77546s	77560	77566	77571
77577n	77597	77598	77665	
ZIP ZONE C				
77011	77012	77013	77015	77017
77023	77029	77034	77049	77061
77075	77087	77089	77430	77444
77480	77486	77502	77503	77504
77505	77506	77521	77530	77535
77536	77547	77562	77578	77581
77583	77584	77587		



Mass Care

HOUSTON OEM

- Shelters
- Mass Feeding Operations
- Cooling Centers
- Points of Distribution (CPODS)
- Warming Centers*



Alerts & Warnings

HOUSTON OEM

LANGUAGE ACCESS

H! ALERT
HOUSTON

IPAWS

INTERNAL NOTIFICATIONS





Thomas Munoz

Acting Director, Public Safety
& Homeland Security

 713-884-4500

Resilience Hubs

Lily Pads



Search & Rescue

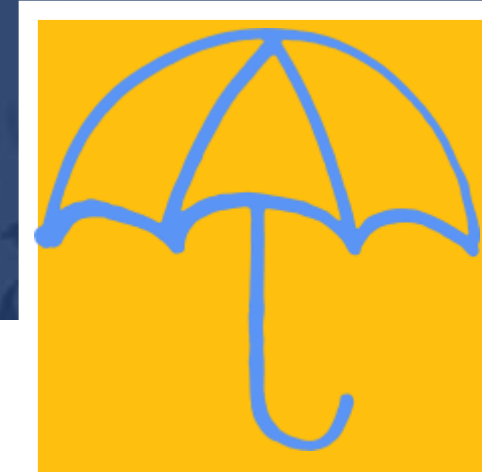
Unflooded location where people can gather to wait for rescue and/or transfer to a shelter or other safe location



Shelter during response

Resilient Houston
Location of refuge with emergency supplies, communication tools, and recovery support and services.

RLRs



Refuge of Last Resort

Temporary refuge for those who do not evacuate before a hurricane. These spaces offer no resources beyond shelter from the storm.

Resilience Hubs



Everyday

Foster community cohesion and provide services to support housing, economic development, and quality of life particularly in historically underinvested communities.



Disruption

Reduce burden on emergency response teams by providing temporary daytime shelter, food and emergency supplies, telecommunications access, among other basic needs to neighborhood residents.



Recovery

The community-led Resilient Hub acts as a gathering center for the dissemination of relief and recovery for individuals while providing guidance on accessing federal and other forms of recovery assistance.