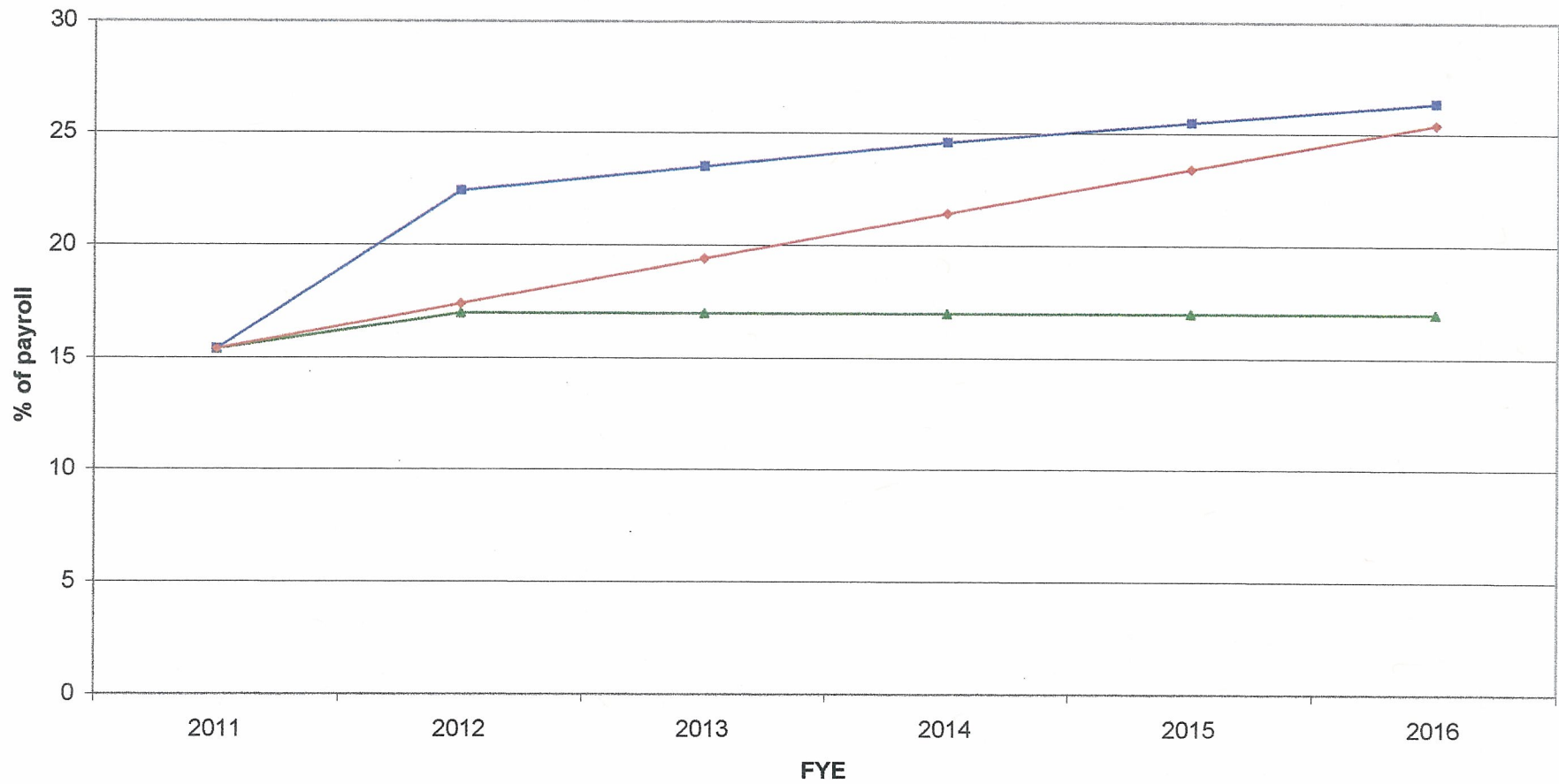
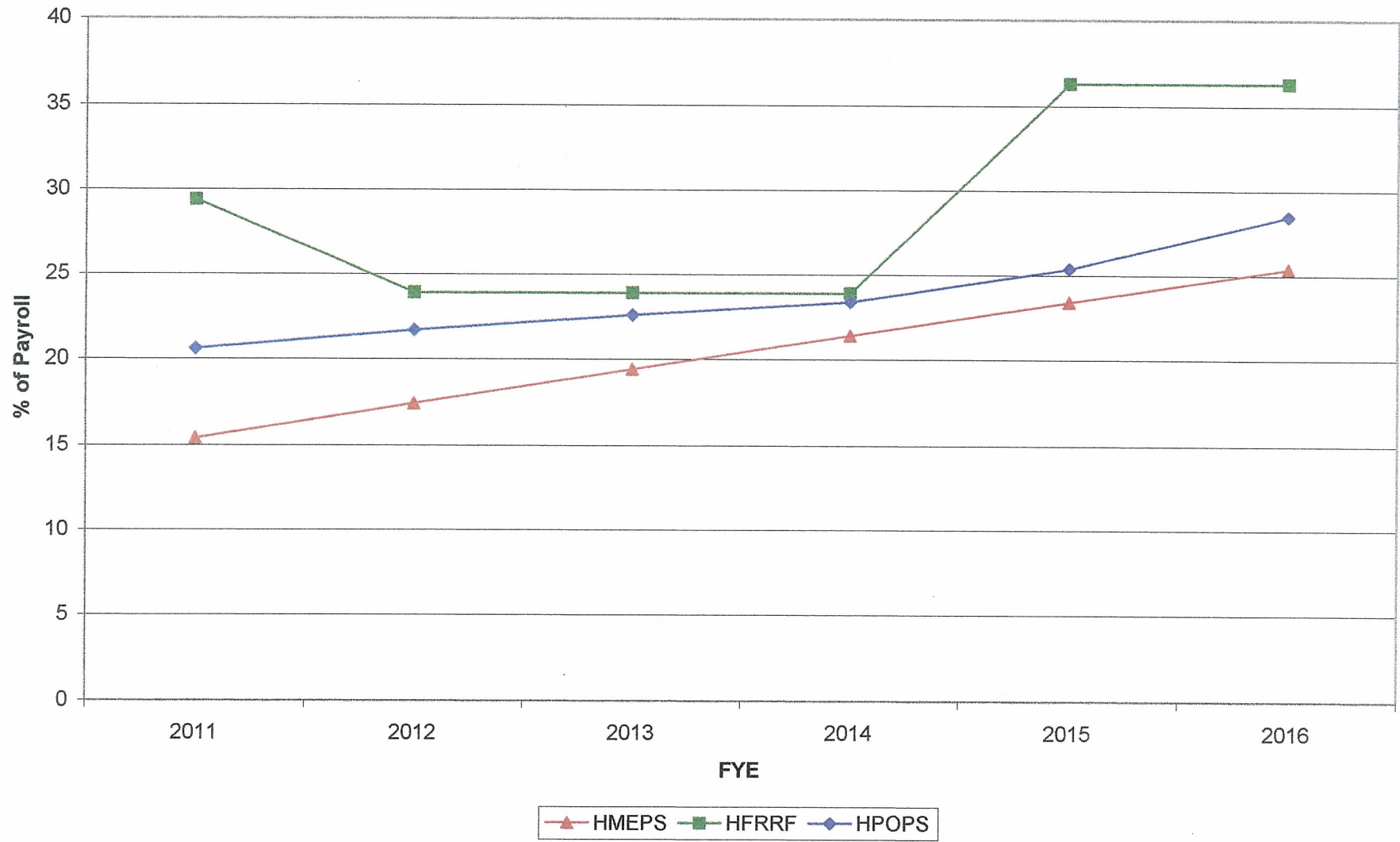


**Projected City Contribution Rates to HMEPS
(Assuming no Significant Recovery in the Investment Markets)**



- ▲— Projected Actuarial Contribution Rates Prior to 2008
- Current Projected Contribution Rates With Immediate Transition to Actuarial
- ◆— Current Projected Contribution Rates With 5-YR Transition to Actuarial

**Projected City Contribution Rates for Retirement Benefits Excluding Social Security
(Assuming No Significant Recovery in the Investment Markets After 6/30/2010)**



**Projected City Contribution Rates for Retirement Benefits Including Social Security
(Assuming No Significant Recovery in the Investment Markets After 6/30/2010)**

